

Take the first street on the right

Then take the second street on the left

in the direction of

along

straight ahead

cross over

to the left, left hand side

to the right, right hand side

right in front of you

rightaway

The museum is on your right

The post office is on the left

You walk straight ahead until the roundabout

along the Noordplein (quare)

You have to follow the channel

third

fourth

fifth

at the end of the street on the right

at the bridge take a left

A COFFEE LOVER'S GUIDE TO CENTRAL BRUSSELS

BARBETON



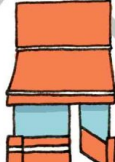
CHICAGO CAFÉ



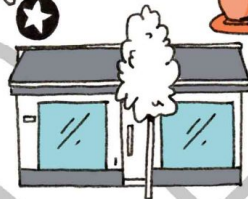
OR COFFEE ROASTERS



MOKA



YUKA ESPRESSO BAR



**CAFÉ
CAPITALE**



**MY
LITTLE
CUP**

**Kaffabar
ESPRESSO &
SLOW COFFEE**



**CAFÉ
DU
SABLON**

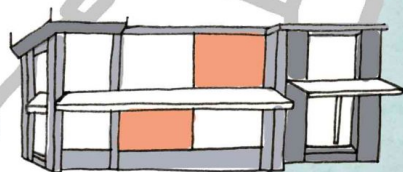


ILLUSTRATION:
ZSOFI LANG
@ZLDRAWINGS

turn right before the bridge